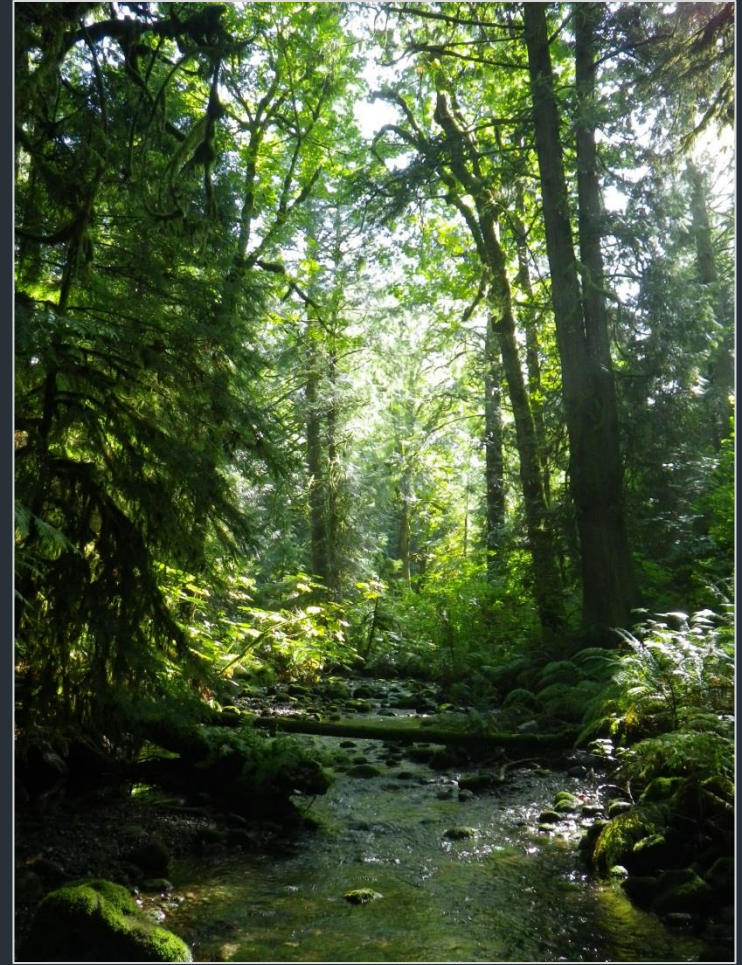
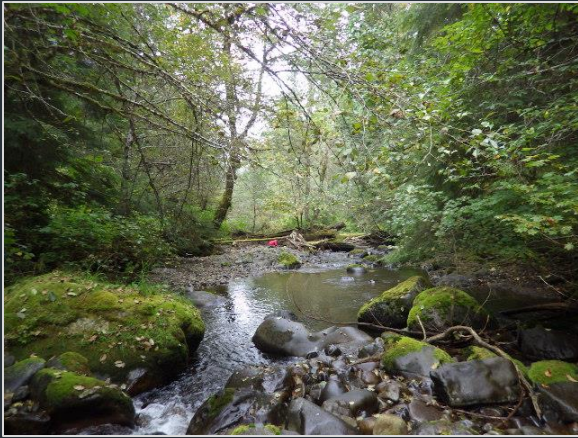


PROTECTING EXCELLENT SITES

2020 Target:
All stream drainage
areas retain “excellent”
B-IBI scores



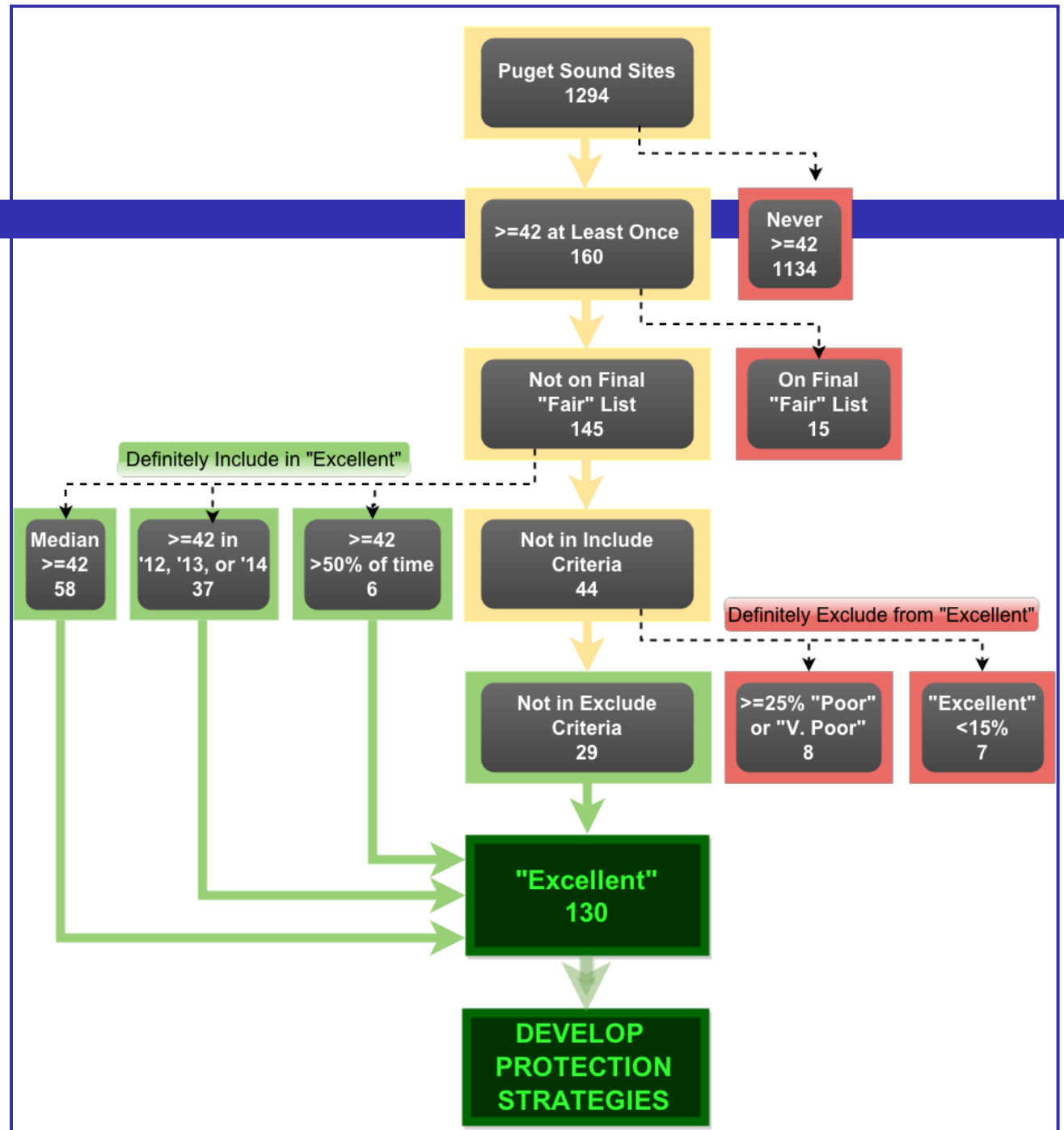
King County

Department of
Natural Resources and Parks
Water and Land Resources Division

Presented by Jo Wilhelm
Stakeholder Workshop, Seattle

May 12, 2015

Site Selection



“Excellent” Sites (≥ 42) = Protection

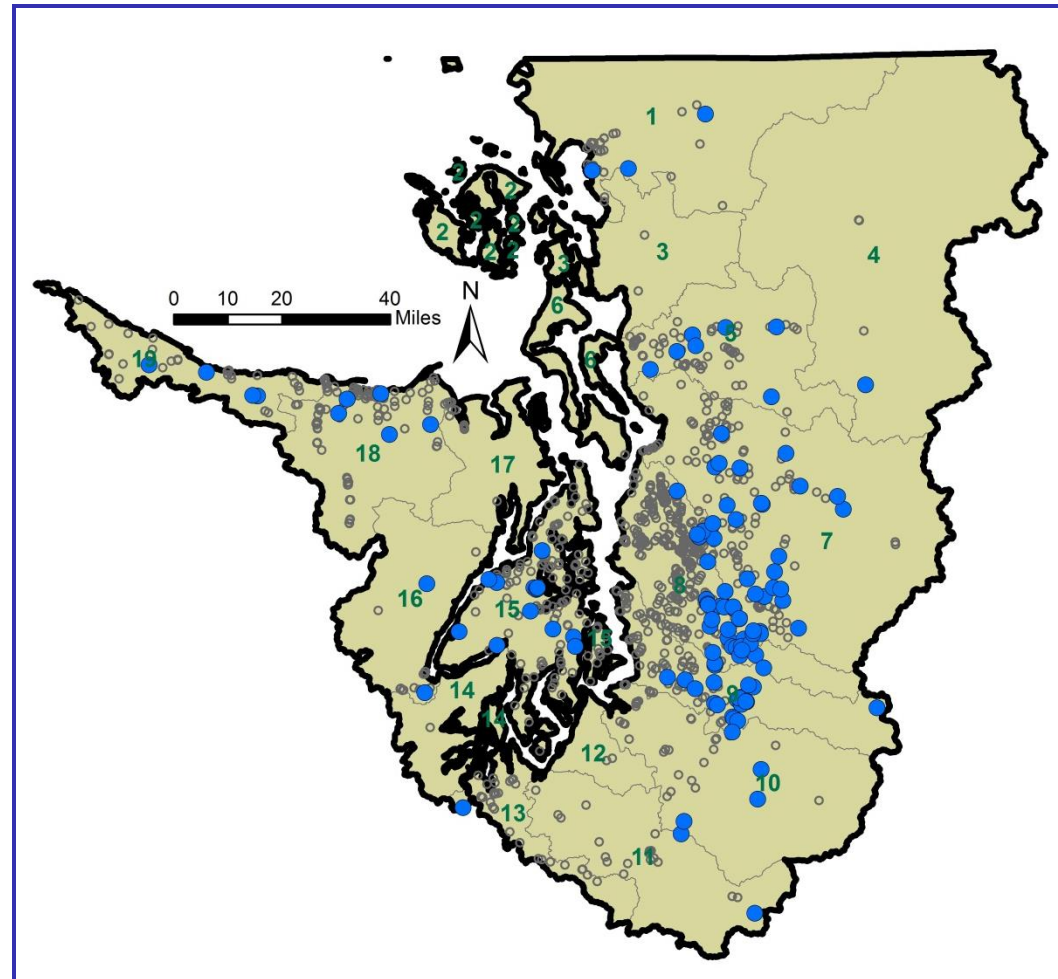
“Excellent” scores

● ≥ 42

🐛 **58** sites had a median “excellent” score

🐛 **78** sites scored “excellent” in 2012, ‘13, or ‘14

🐛 Several are from overlapping basins or streams: ~ **101 unique basins**

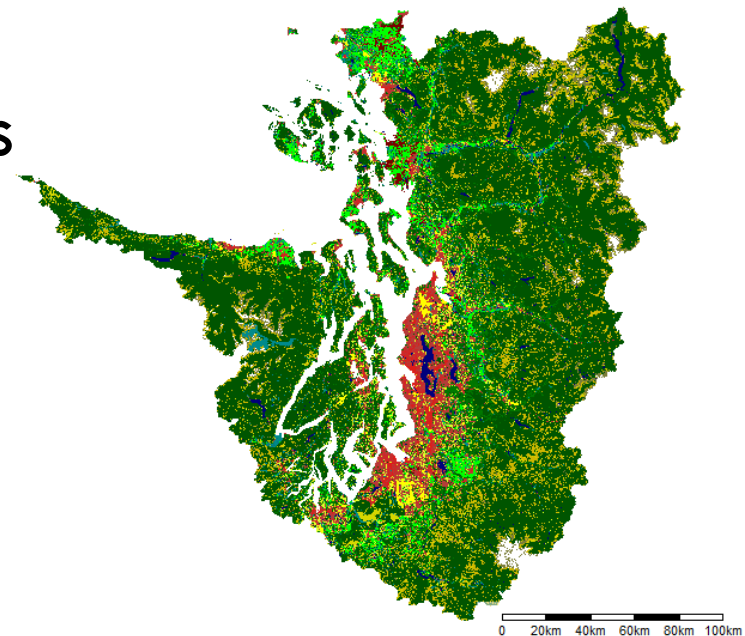


Considerations: Land Use (C-CAP)

2011 Land Use	Median (min-max)	Notes
% Natural	97 (33-100)	
% Natural (buffer)	97 (42-100)	
% Urban	1 (0-43)	>20%: 10; 10-20%: 10
% Ag - Pasture	0 (1-26)	>10%: 5

🦋 “Excellent” sites primarily in undeveloped, forested basins

🦋 A few exceptions with moderate urban and agricultural development



Considerations: Zoning


Puget Sound Mapping Project

Zoning Category	Median (min-max)	Notes
Intensive Urban	0 (0-62)	>5%: 6
Urban Character	0 (0-72)	>20%: 6; 5-20%: 10
Rural Character	11 (0-100)	>90%: 20; 30-90%: 18
Resource Forest	84 (0-100)	>90%: 48; 50-90%: 17

 Almost no preservation and conservation zoning


 Widespread threats:

 Forest harvest

 Rural development (1 unit/5 to 20 acres)

 Urban development (>1 unit/acre)

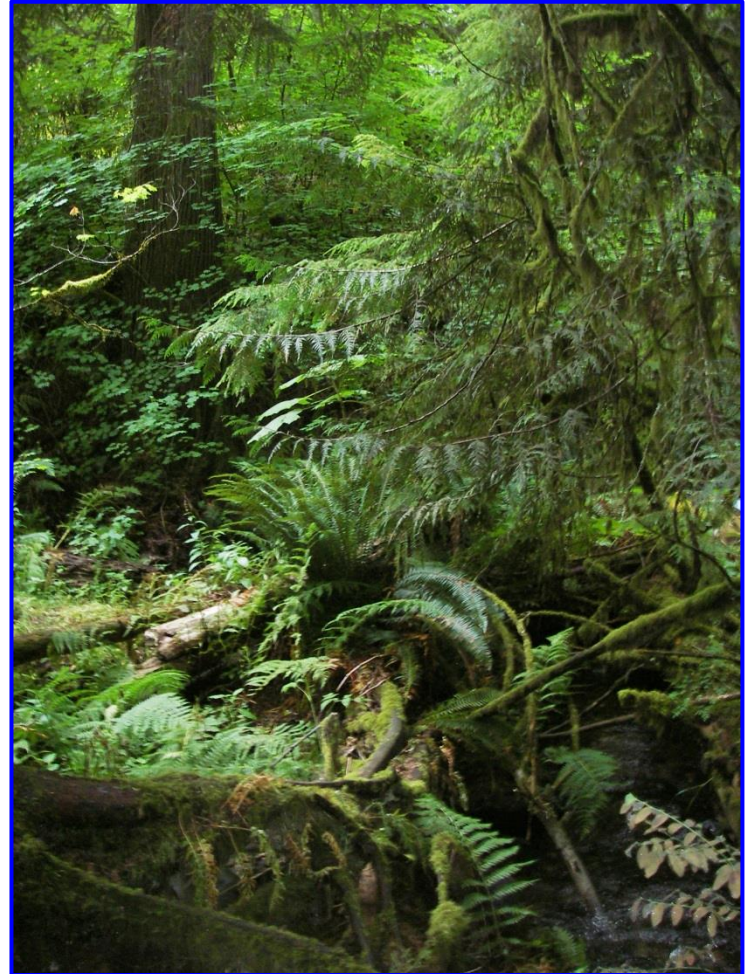
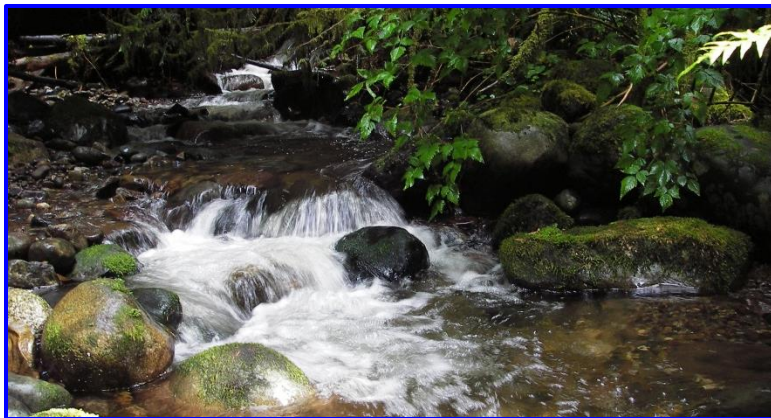
 Basin specific challenges:

 Mining (2: 15% , 33%)

 Developed military (2: 6% , 87%)

Strategies to Preserve “Excellent” Sites

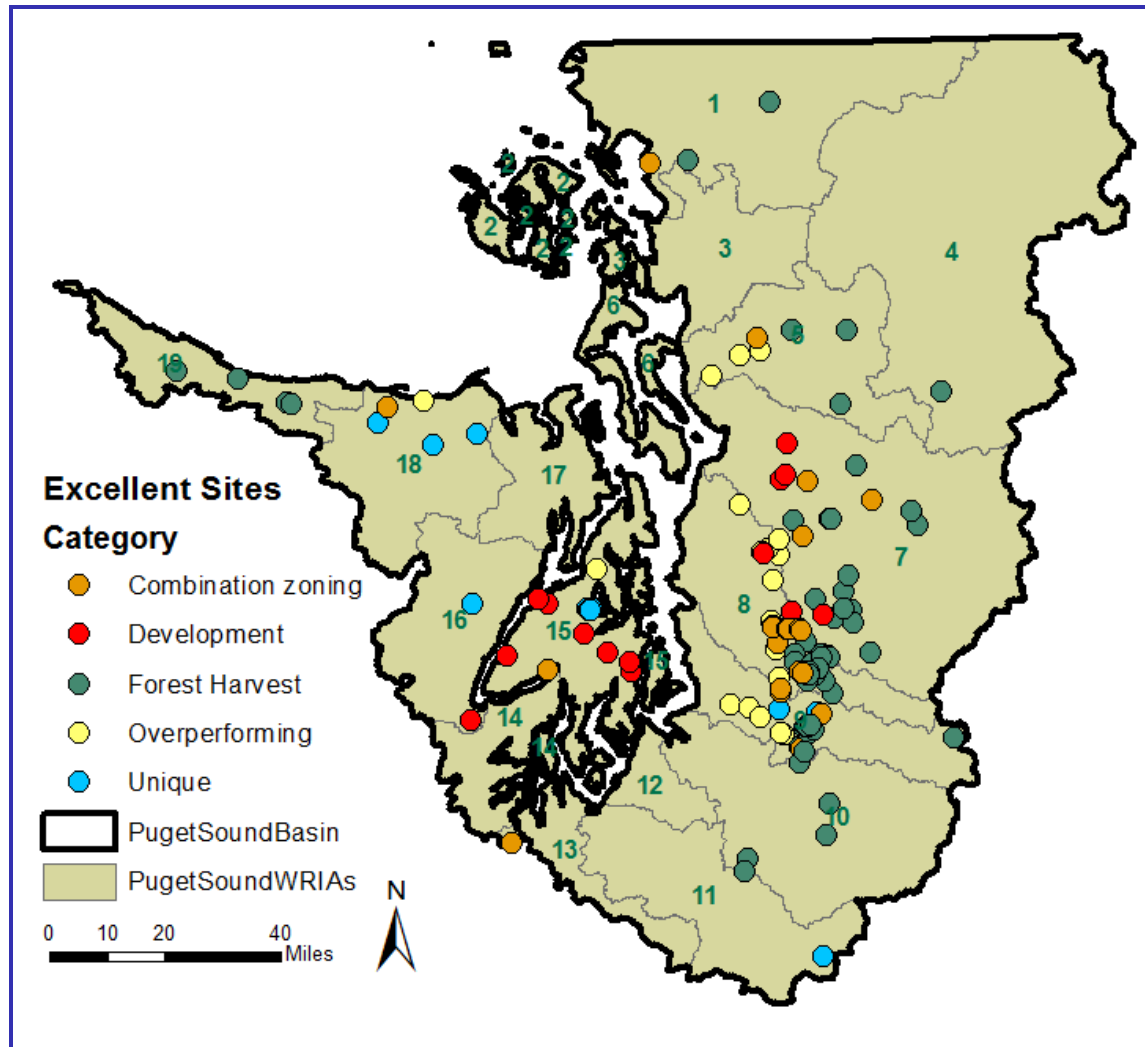
- Land purchase
- Conservation easements
- Development rights
- Encourage/enforce BMPs
- Local restoration



“Excellent” Protection Categories

# Basins	Category	Definition	Strategies								
			Restoration	Purchase	Easements	Dev. Rights	Forestry BMPs	Ag BMPs	LID	SW Controls	
18	Over-performing	Current Ag + Urban > 15%	X	X	X	X	X	X	X	X	X
46	Forest Harvest	> 90% Resource Forest Zoning		X	X		X				
13	Development	> 80% Urban/Rural Zoning		X	X	X				X	X
15	Combination Zoning	24-90% Forestry; 10-76% Rural		X	X	X	X	X	X	X	X
9	Unique	Doesn't fit in other categories	Basin Specific								

“Excellent” Protection Categories



Take Home Messages

- Population growth is a regional challenge
 - April 2014: 3.8 million
 - 2040 projection: 5 million (>30% increase)
- Prevention and conservation are much less costly than restoration
- Protecting healthy watersheds makes economic sense!

