

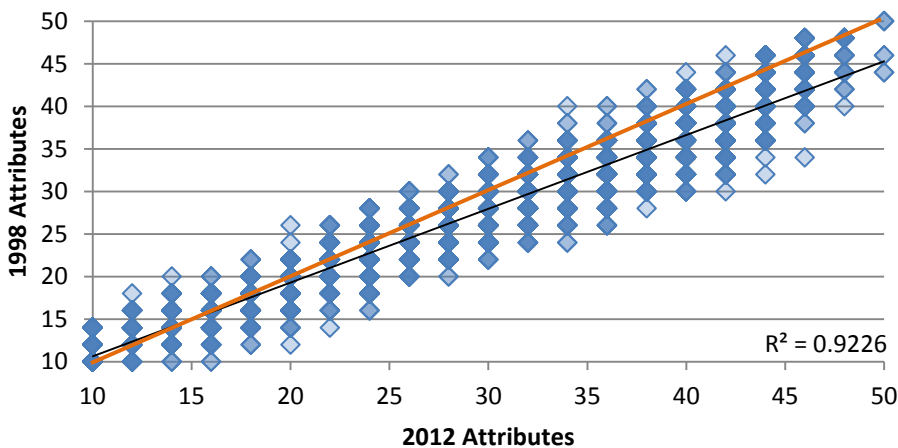
Attribute Comparison and PL BIBI vs Ecology MMI
5/31/12 by Jo Wilhelm, King County

ATTRIBUTES

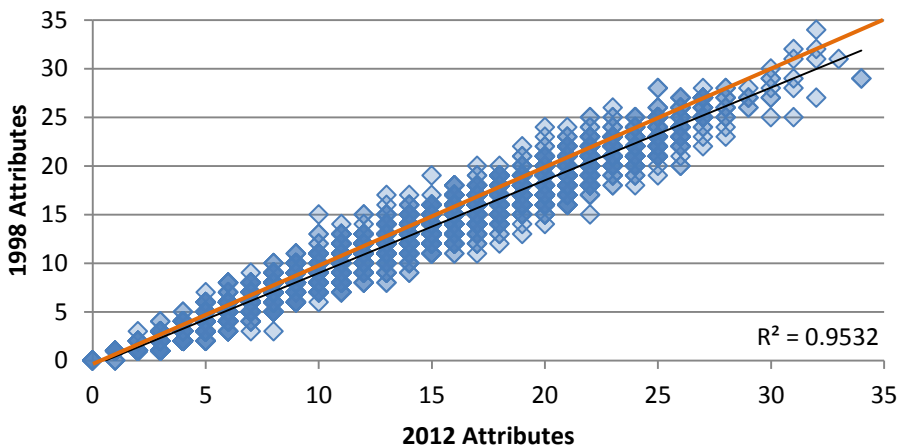
All are calculated with the following selected from the Puget Sound Stream Benthos (PSSB): Sum reps then calculate (to approximate composite sampling and standardize across replicate methods), then subsampled at visit level to a 500 count. I used all available stream data, therefore the same site can be repeated in different years. For the attribute comparison, chose 'lab's method' for BIBI calculation and then either the 1998 or the 2012 draft 2 attributes – both of these apply the attributes from all 5 categories: clinger, long-lived, predator, intolerance, and tolerance.

In the figures that follow, the black line is the best fit line with the R² displayed. The orange line is approximately the 1:1 line. Darker symbols represent overlapping data points.

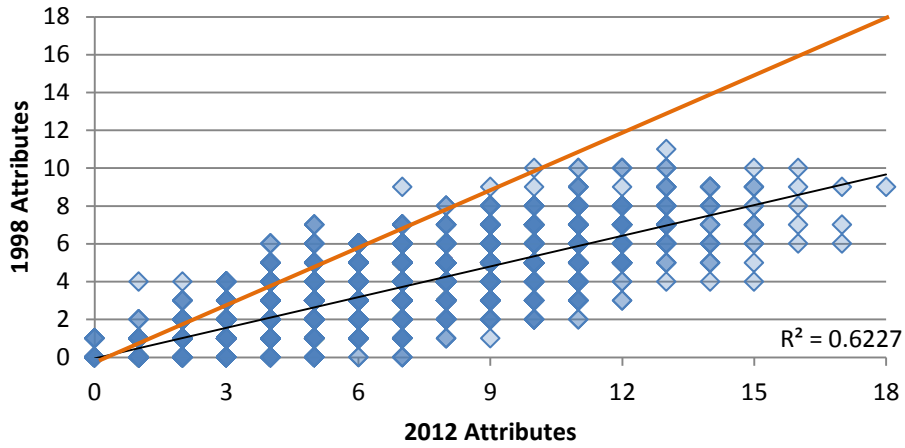
Overall BIBI Score



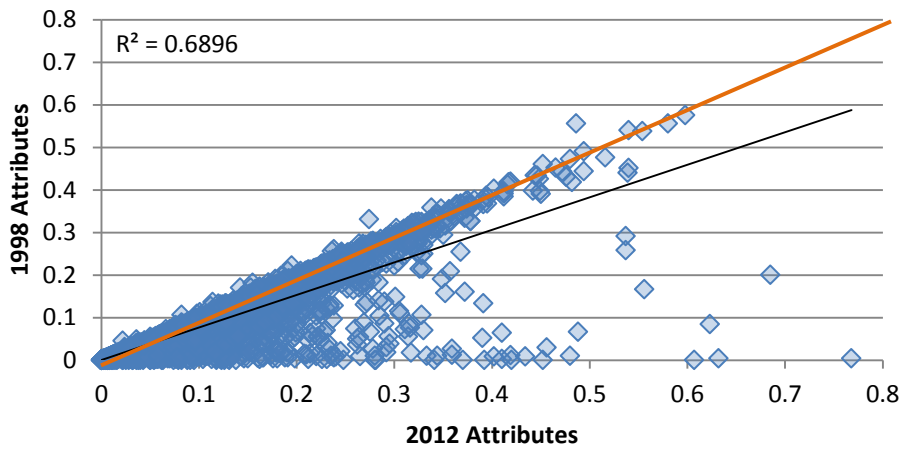
Clinger Richness Metric



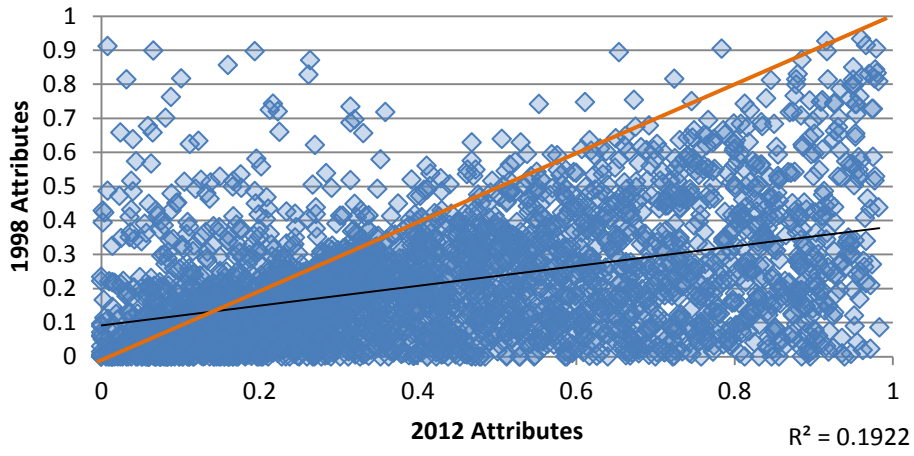
Long Lived Richness Metric



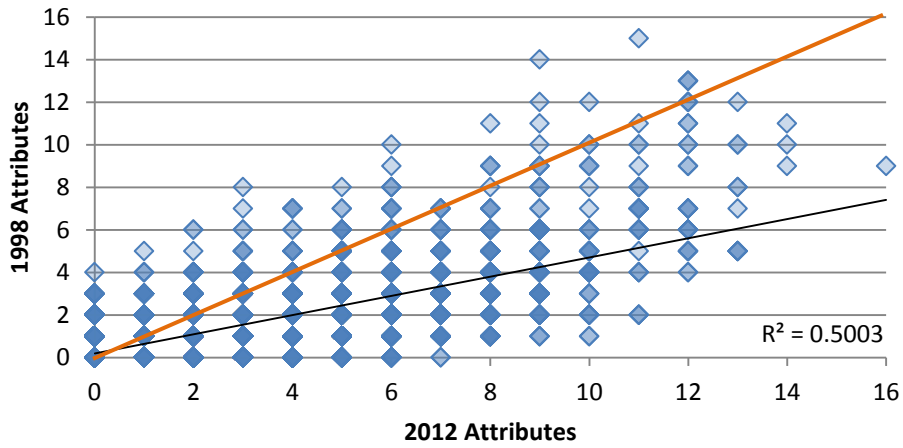
% Predator Metric



% Tolerant Metric



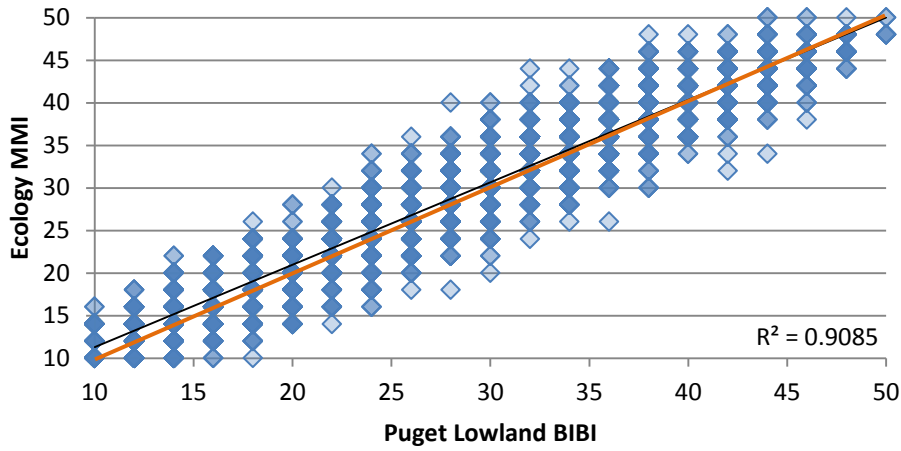
Intolerant Richness Metric



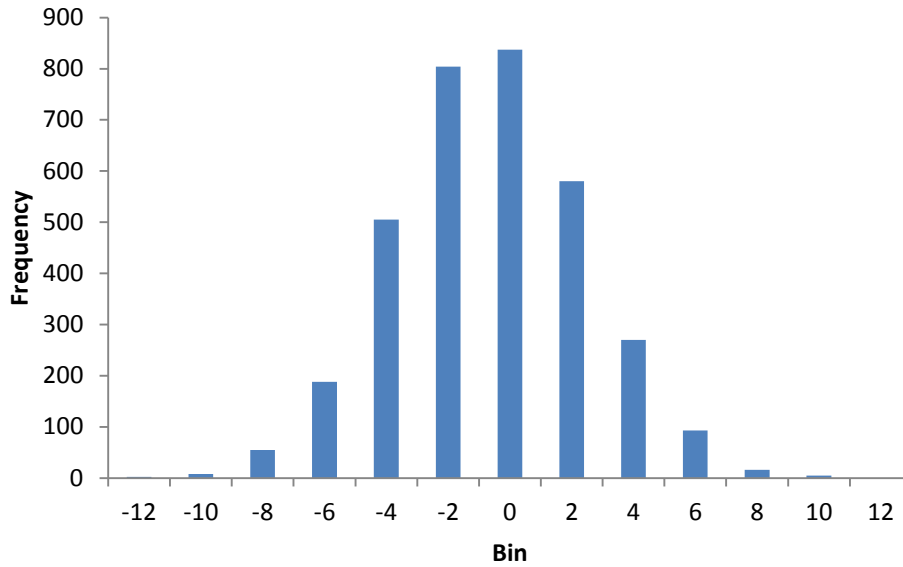
BIBI COMPARISON:

Puget Lowland Benthic Index of Biotic Integrity (PL-BIBI) versus Ecology's Multimetric Index (MMI)

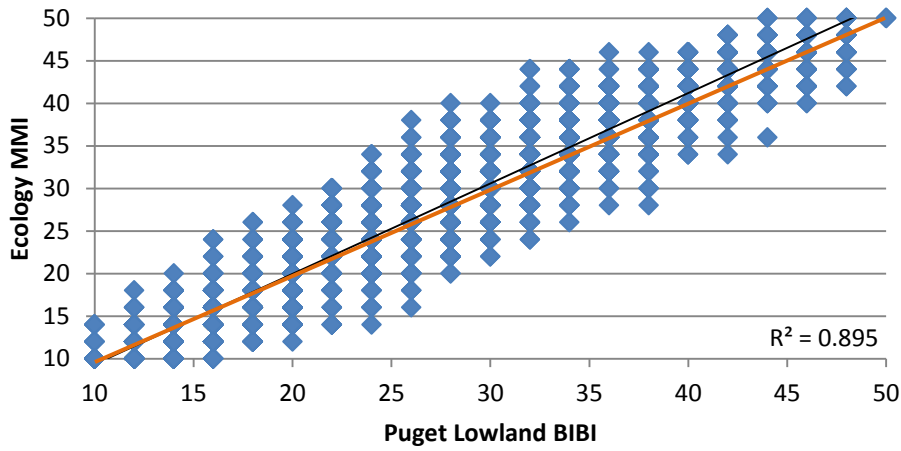
2012 Attributes



2012 MMI vs PL residuals



1998 Attributes



1998 MMI vs PL residuals

